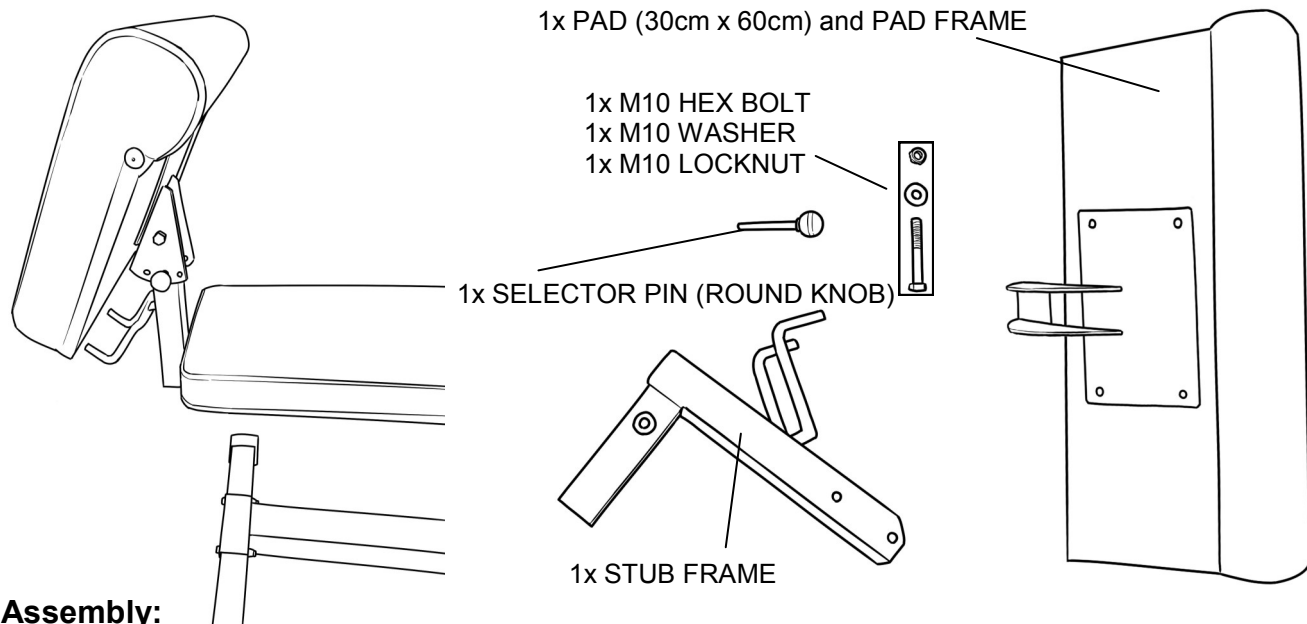


Assembly & Operating Instructions

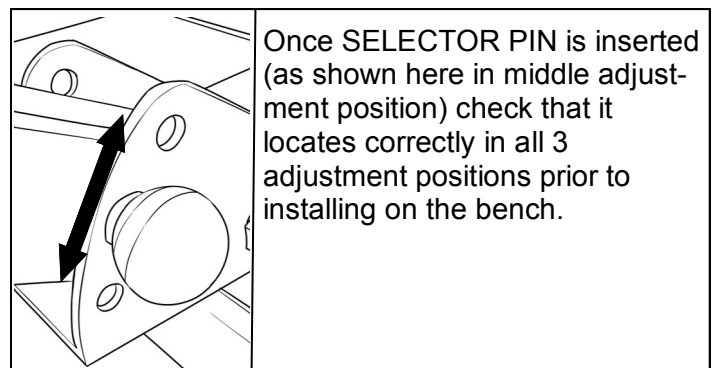
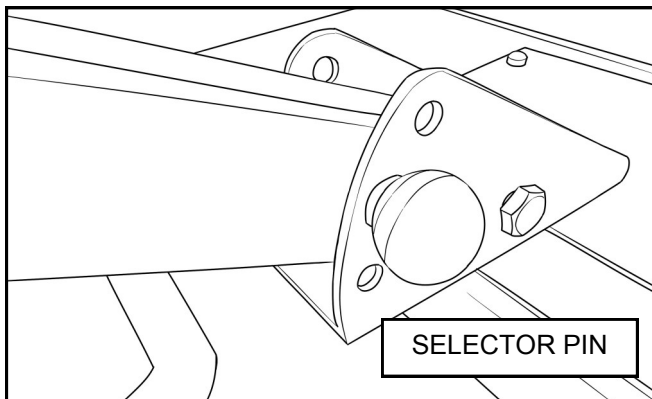
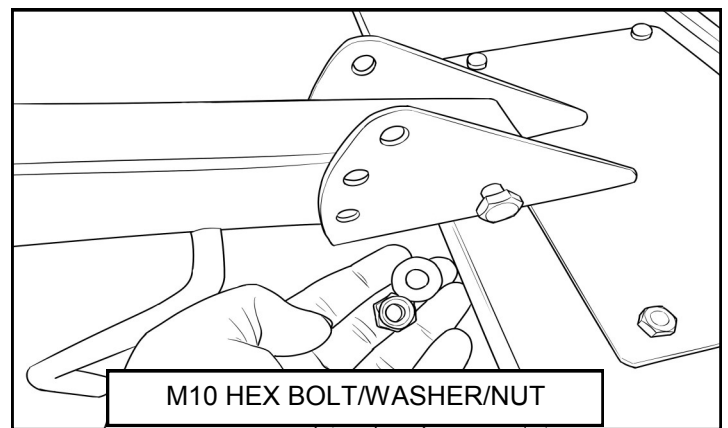
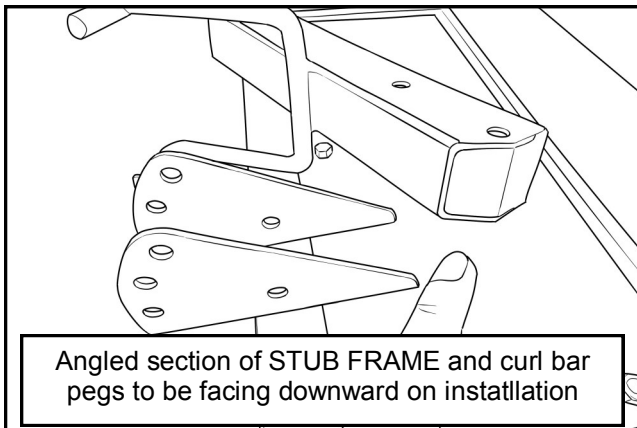
Ironmaster Preacher Curl Pad for Super Bench

Congratulations on your purchase of this fine Ironmaster product. For any technical questions or support please contact us at 1-800-533-3339. Be sure to read and understand the operating instructions.



Assembly:

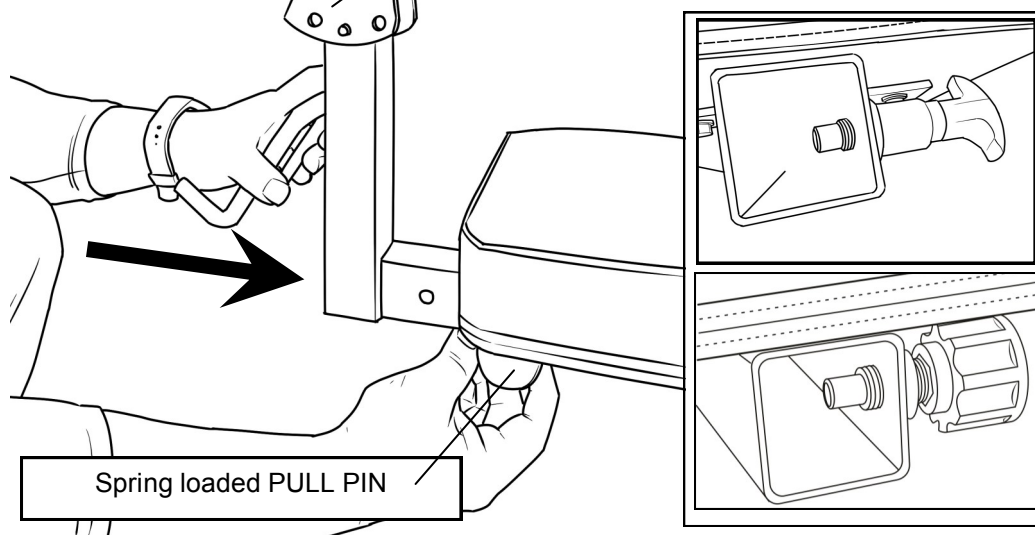
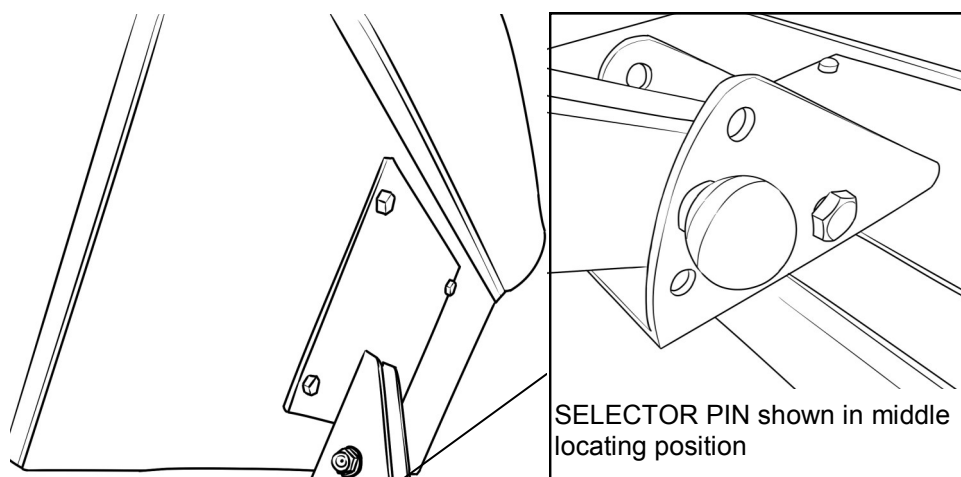
First, locate the STUB FRAME. Mount to the SEAT PAD FRAME using M10 Hex bolt, M10 Nylock nut and Washer. Curl bar pegs should be pointed away and downward. Use angled portion of STUB FRAME to further aid in correct orientation. When correctly installed, the SELECTOR PIN should freely install into any of the 3 adjustment positions.



Operation:

This attachment plugs into the Super Bench on the top end and is held in place with the spring loaded pull pin. You can change the pad angle by inserting the selector pin in one of the three positions. You can also change the angle by rotating the Super Bench to different angles.

Note: If you put a high amount of weight on the curl bar holder pegs, the bench may tip forward when not sitting on it. In this extreme case, you can put a large weight plate or dumbbell on the opposite end of the Super Bench pad to hold it down.



NOTE: The Ironmaster SUPERBENCH currently has 2 spring loaded PULL PIN options, depending on your time of Purchase. Although both perform in a similar manner, please familiarize yourself with the PULL PIN that matches your SUPERBENCH prior to first use.

Please be sure to read following page for details.

Warranty Information:

Ironmaster warrants to the original purchaser that this Home Fitness Product will be free from defects in workmanship and materials for a specific period from date of purchase based on the part type listed below. During the warranty period, Ironmaster will either repair or replace, at its option, defective part(s) at no charge. Warranty covers in home use only.

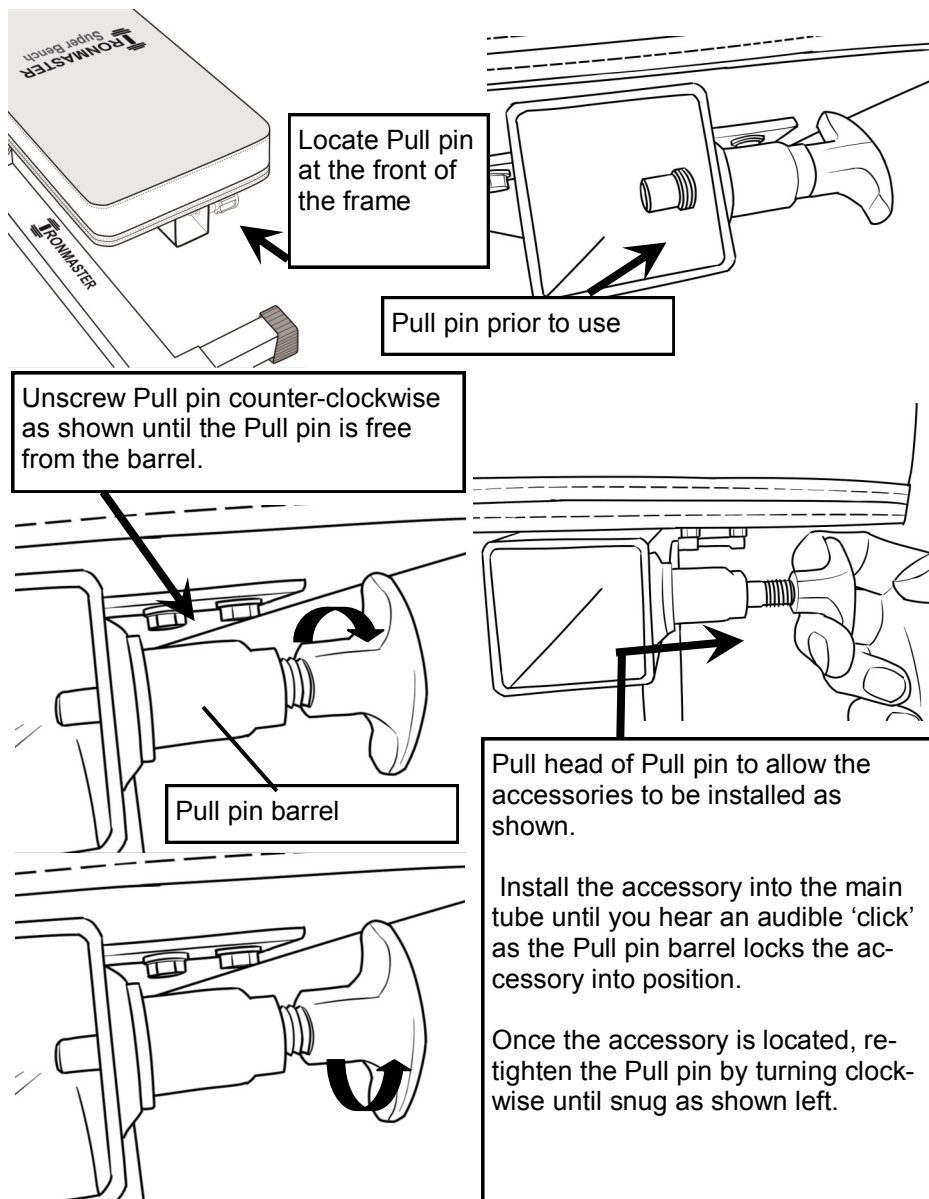
1 year for normal wear items such as rubber, upholstered parts and surface finishes.

10 years for frame and structural components.

Shipping costs are not included in the warranty and some items may need to be sent to Ironmaster for repair or replacement. Installation of any parts and labor involved is not included. The warranties described above shall be the sole and exclusive remedy available to the purchaser. Correction of defects, in the manner and for the period of time described above, shall constitute complete fulfillment of all liabilities and responsibilities of Ironmaster to the purchaser with respect to the product, and shall constitute full satisfaction of all claims, whether based on contract, negligence, strict liability or otherwise. In no event shall Ironmaster be liable or in any other way responsible for damages or defects in the product which were caused by repairs or attempted repairs performed by anyone other than Ironmaster or Authorized service Contractor. This warranty shall not apply if the defect was caused by misuse, neglect or normal wear and tear of the product purchased. Nor shall Ironmaster be liable or in any way responsible for any incidental or consequential economic or property damage. Some states do not allow the exclusion of incidental or consequential damage, so the above exclusion may not apply to you.

Using the Super Bench with accessories:

The Ironmaster Superbench is designed to accommodate an array of accessories (Note only Ironmaster accessories are to be used with the Super Bench). Located at the front of the Super Bench is a pull pin, which is both spring loaded and threaded for additional safety/positive locking.



First, locate the Pull pin at the front of the frame under the main bench pad. To operate, turn the pin counter clockwise until you are able to pull the pin against the spring.

It is recommended to unthread the pin once or twice to familiarize yourself with how many turns it takes to disengage the threads but keep the pull pin barrel inside the frame before using any accessories.

CAUTION: Although the pull pin is spring loaded and a positive lock, it is nevertheless recommended that the pull pin be tightened firmly while any accessories are being used with the Super Bench.

WARNING: Never under any circumstances use any of the Super Bench accessories with either a faulty or missing pull pin in conjunction with the Super Bench. Serious injury could occur.

If the Pull pin fails to operate correctly or for any reason, fails to locate properly with the Ironmaster accessory, discontinue use and contact your nearest dealer.

Specific installation instructions for the various Ironmaster accessories can be found in the User manuals provided with each Ironmaster accessory.

For further details regarding the Super Bench, operation, use with accessories, tutorials and video links, please visit our website at www.ironmaster.com